

# YH-600A Pro Quick Operation Manual

## 1. Button Function



**On-Off/OK Button:** Turn on/off the device, confirm adjustment.



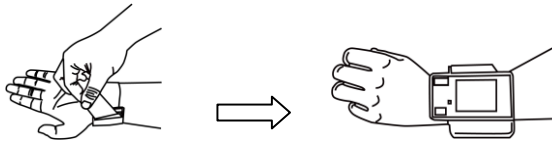
**Shift Button:** Switch interfaces and options.



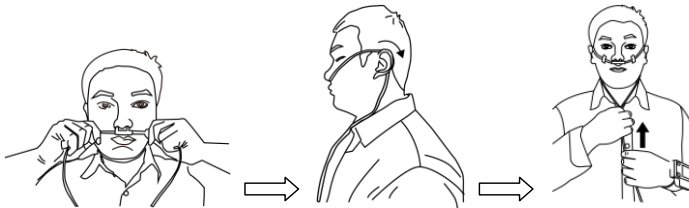
If there is no “Exit” on menu page, press and hold these two buttons together to exit menu page.

## 2. Setting up the Device

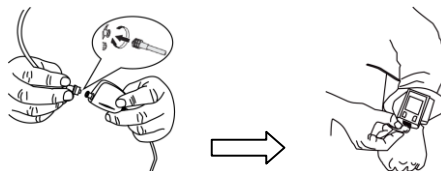
- (1) Wear main device on the wrist (preferentially on left wrist) like a watch, and fasten the wrist belt and move the main device to a comfortable position.



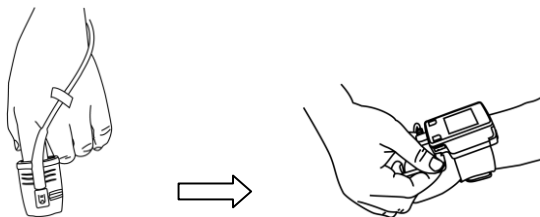
- (2) Make the two small open tubes on airflow cannula point towards your nostrils. Fit the loop around your ears and then back around your neck, without pulling over your head. Draw the cannula to a comfortable position under your chin, place adhesive tape as indicated to help secure the cannula.



- (3) Fit the airflow cannula to the connection of the airflow kit by turning it clockwise, and insert the data connector of the airflow kit into the **Flow/COM port** on the right side of the device.



- (4) Insert the index finger into the pulse oximeter sensor. The finger must reach the end of the sensor, but don't over the end of the sensor. Insert the data connector of the pulse oximeter sensor into the **SpO<sub>2</sub> port** on the top of the main device.

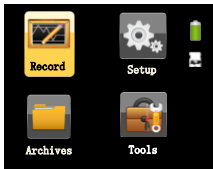


- (5) The figure below shows what it looks like when each accessory is fitted.



### 3. Recording

- (1) Power on device by pressing and holding **On-Off/OK Button** ①/✓ for approximately five seconds, enter the "Record" interface.



- (2) If each accessory is connected well, the "Record" interface can be accessed. The time notification (0:00:00) in the upper left corner of the "Record" interface flickers. Press and hold the **On-Off/OK Button** ①/✓ for approximately two seconds to start recording.



- (3) Stop the recording by pressing and holding the **On-Off/OK Button** and **Shift Button** ①/✓ + ☺ simultaneously approximately three seconds. Power off device by pressing and holding **On-Off/OK Button** ①/✓ for approximately five seconds.

## 4. Data Analysis

From the “Archives” interface, users can view each recording data and have a look of SAHS severity as below:



## 5. Operation in “Tools” Interface

From the “Tools” interface, data can be transferred via Bluetooth and erased manually. You can also choose different languages in this interface.

## 6. Important Tips

Before using the device, please read the entire user manual and memorize all information necessary to ensure proper use of the device.