



When?



What?



By whom?

When?	What?	By whom?
Before commissioning	Safety check	Provider/Service
Weekly	Clean/replace coarse filter, visual inspection of fine filter	User
Monthly or if heavily contaminated	Replace fine filter	User
Every 6 months	Battery quick test	User/Provider
Every 6 months during storage	Charge battery to 100 %	User/Provider
Every 2 years	Maintenance 2 (refer to the service manual)	Provider/Service
After 15000 h blower run time or every 5 years	Maintenance 5 (refer to the service manual)	Provider/service

**RUNNING A BATTERY QUICK TEST**

The battery quick test should be done 6 months as follows:

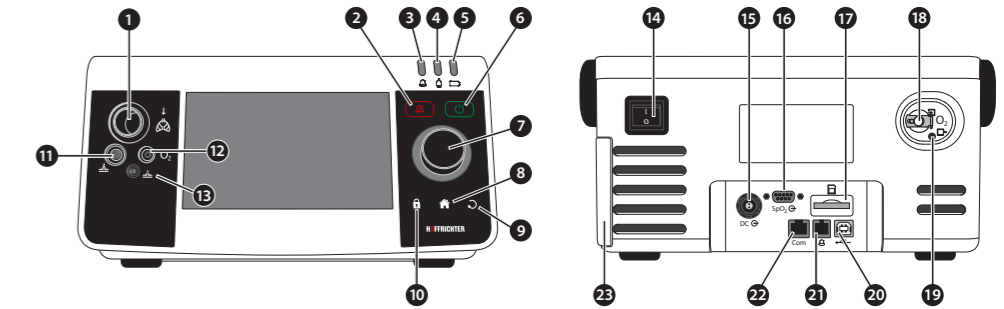
1. Make sure that the battery is fully charged (100 %).
2. Disconnect the device from the power supply and operate it for 1 hour on battery.
3. The battery passed the test, if the battery charge is higher than > 10 % after one hour and the "Low Internal Battery" message has not appeared. Should the battery charge fall below 10 % and the alarm "Internal battery low" message appear, then the battery has to be replaced by an authorized service representative.
4. Charge the batteries up to 100 % by operating the devices via mains.

**Brief instructions**

as of device software 3.300

This document does not replace the user's manual. Make sure to read the user's manual!

**DEVICE DESCRIPTION**



- 1 Tube circuit connection - Inspiration
- 2 Confirm audio alarm pausing for 2 min
- 3 Alarm LED
- 4 Power LED
- 5 Battery LED
- 6 Start/stop ventilation
- 7 Multifunctional key MFK
- 8 Switch to home screen
- 9 Escape
- 10 → MFK: Unlock/lock keys
- 11 Control tube connection
- 12 Oxygen sensor cable connection
- 13 Pressure measuring tube connection
- 14 Switch device On/Off
- 15 DC connection
- 16 SpO<sub>2</sub> sensor connection
- 17 SD card slot
- 18 Oxygen supply connection
- 19 Oxygen output
- 20 USB interface (PC connection)
- 21 Remote alarm/nurse call
- 22 RS232 interface (accessories)
- 23 Filter cassette

©2019 HOFFRICHTER GmbH  
All rights reserved.

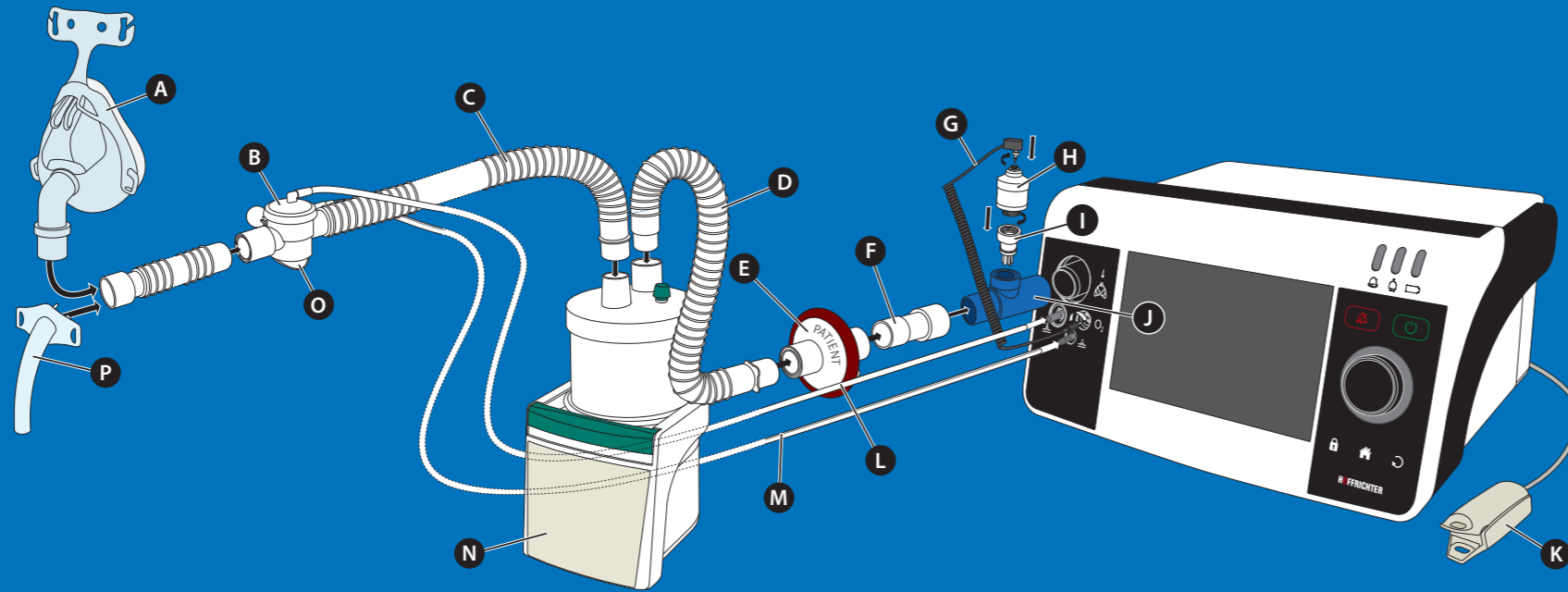
The HOFFRICHTER GmbH reserves the right to change or replace the brief instructions without prior notice. Make sure that you are always using the most current version. Please obtain information about the current version by contacting your provider or by visiting our website at [www.hoffrichter.de](http://www.hoffrichter.de).

HOFFRICHTER GmbH  
Mettenheimer Straße 12/14  
19061 Schwerin  
Germany  
Telephone: +49 38539925-0  
Fax: +49385 39925-25  
Email: [info@hoffrichter.de](mailto:info@hoffrichter.de)  
[www.hoffrichter.de](http://www.hoffrichter.de)



## SYSTEM STRUCTURE

- A Mask
- B Expiration valve
- C Tube circuit
- D Connection tube<sup>1</sup>
- E Bacterial filter<sup>1</sup>
- F Bacterial filter adapter<sup>1</sup>
- G Connector cable<sup>1</sup>
- H FiO<sub>2</sub> sensor<sup>1</sup>
- I FiO<sub>2</sub> sensor adapter<sup>1</sup>
- J T adapter<sup>1</sup>
- K SpO<sub>2</sub> sensor<sup>1</sup>
- L Control tube
- M Pressure measuring tube
- N Humidifier<sup>1</sup>
- O Air outlet
- P Tracheal cannula



<sup>1</sup> Optional

## EXPLANATION OF THE TOOLBAR SYMBOLS

	Clinic mode active		A FiO <sub>2</sub> sensor is connected and "FiO <sub>2</sub> -Monitoring" setting has been set to "Internal" in the system screen.		SD card is inserted in the device
	Home mode active		The "FiO <sub>2</sub> -Monitoring" setting has been set to "External" in the system screen. Measurement of oxygen concentration is performed using an external FiO <sub>2</sub> -Monitoring unit.		No SD card in the device
	High-priority alarm		A FiO <sub>2</sub> sensor is connected, the "FiO <sub>2</sub> -Monitoring" setting has been set to "Internal" in the system screen and oxygen is supplied.		PC is connected via the USB port
	Medium-priority alarm		The "FiO <sub>2</sub> -Monitoring" setting has been set to "External" in the system screen. Measurement of oxygen concentration is performed using an external FiO <sub>2</sub> -Monitoring unit and oxygen is supplied.		Error detected
	Low-priority alarm				Internal battery fully charged
	Audio alarm paused				Internal battery being charged (1 bar ± 20 % of charge)
	Counter "Audio alarm paused"				
	Keylock activated				
	Spontaneous breathing detected				
	SpO <sub>2</sub> sensor connected				
	Trigger lock "On"				
	Trigger lock currently active				

	SD card is inserted in the device
	No SD card in the device
	PC is connected via the USB port
	Error detected
	Internal battery fully charged
	Internal battery being charged (1 bar ± 20 % of charge)

## IMPORTANT OPERATING ACTIONS

### LOCK/UNLOCK KEYS

Press the safe key . flashes in the toolbar for about 5 s. Press the MFK during that time.

### SWITCHING ON/OFF THE DEVICE

The device is switched on and off with the main switch on the back of the device.

### START VENTILATION

Press the ON/OFF key to start the ventilation.

### STOP VENTILATION

Press the ON/OFF key . Select "Yes" by turning the MFK. Press the MFK.

### DISPLAY BATTERY STATUS

Touch the battery symbol .

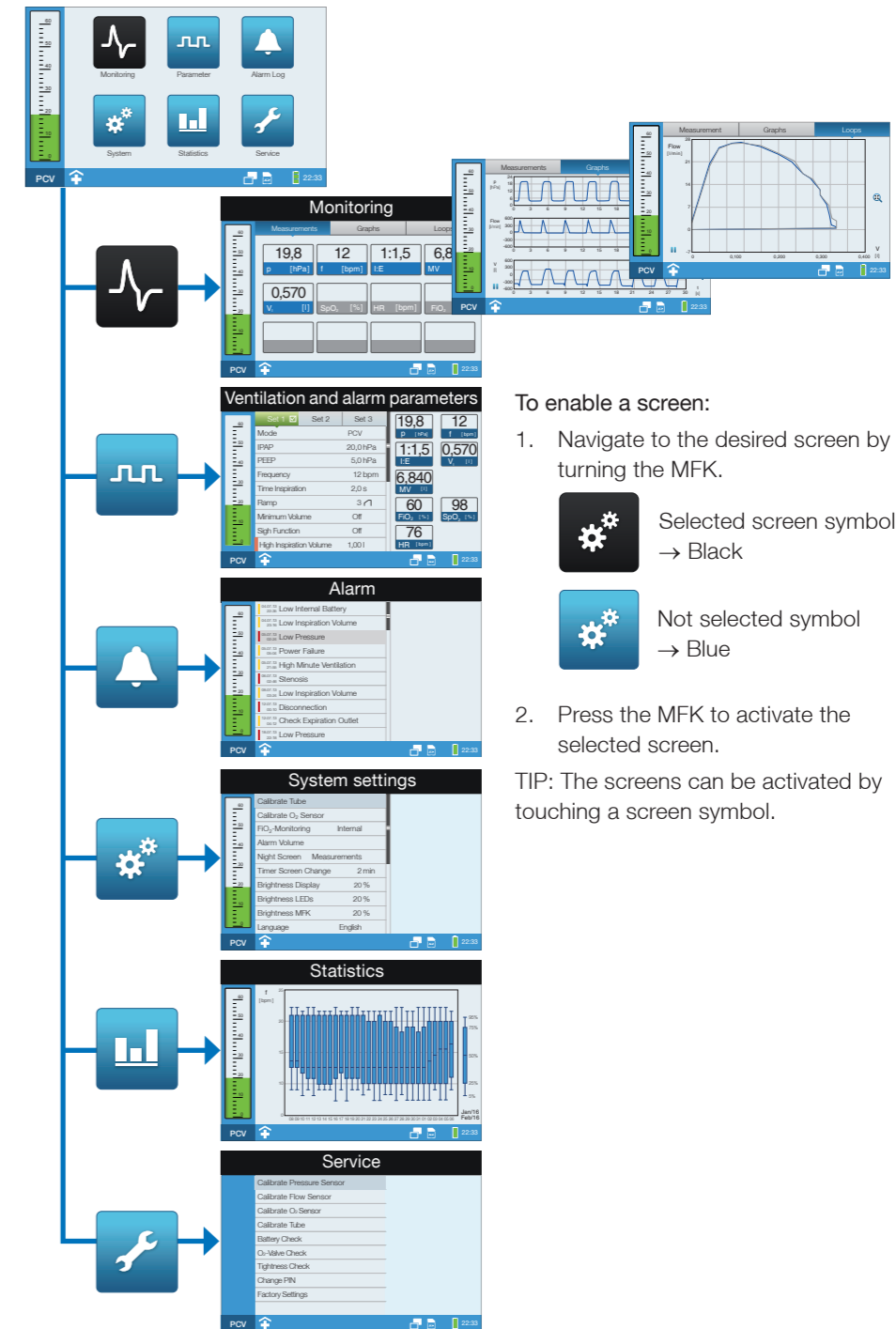
### DISPLAY ERROR LIST

Touch the error symbol .

### SWITCHING NIGHT SCREEN ON AND OFF

Touch the symbol , to switch on night screen. To switch night screen off, touch or select any control element (except Safe key).

## MENU STRUCTURE



To enable a screen:

1. Navigate to the desired screen by turning the MFK.

Selected screen symbol  
→ Black

Not selected symbol  
→ Blue

2. Press the MFK to activate the selected screen.

TIP: The screens can be activated by touching a screen symbol.