

Serial Number

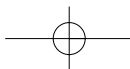
Each **HOFFRICHTER** device is provided with a serial number which guarantees the product can be traced back. The serial number is on the type identification plate to be found on the reverse of the device.

In case of any query or complaint, please always state the serial number.

Conformity



The device complies with the requirements of the directives 93/42/CEE.



Contents

Legend of Symbols	04
Safety Instructions	05
Intended Use	08
Technology of AutoTREND	09
Hints to be observed before starting	11
Description of the Device	12
Proper Use of the Device	15
Use of Oxygen	17
Cleaning Instruction, Changing of Filter	18
Alarm Functions of AutoTREND	19
Functions of AutoTREND	20
Trouble Shooting	25
Display Indications	28
Inspection and Check	29
Approved Accessories.....	30
Technical Data	31

Legend of Symbols

Information on the Type Identification Plate:



Pay attention to user's manual



Applied part type BF



Protection class II (insulation - enclosed)



CE - Conformity statement



Do not dispose of device in household waste

Safety Instructions

Before first use of your **AutoTREND**-device, please read this manual thoroughly.

Keep the manual in a safe place, so that you will be able to consult it whenever necessary.

Attention!

HOFFRICHTER GmbH shall not be held liable for any damages or consequential damages, consequences for safety, reliability and performance of the device, in case of:

- ▶ Tampering, modifying, adding expansion features, adjustment, repair and maintenance executed by persons who have not been authorized by us.
- ▶ Building in accessory and spare parts which have been fabricated by other manufactures and not been released by us for use in the respiration therapy device **AutoTREND**.
- ▶ Using the therapy device in a different way as described in the manual.

Power Supply

AutoTREND has a switched mode power pack with a wide power supply range of 100 V~ ... 240 V~, 50 ... 60 Hz. This allows connection to power supply lines all over the world. It should be noted that this unit must be connected only to a grounded contact socket outlet.

This device is a product of protection class II (protective insulation). The grounding wire of the power cord is internal used as functional earth.

DC operation is also possible with 24 VDC, e.g. for mobile use in a truck or caravan. Connect the unit to a DC power source only with the connecting cable supplied.

Safety Instructions

Please observe the following points in order to avoid dangerous situations which may occur:

1. Use the device exclusively for your own respiration therapy and only according to what has been directed by your physician.
2. Only use accessory recommended and offered by your authorized dealer.
3. Check the alarm functions of the device at regular intervals (see page 19).
4. Make sure the small opening in the mask or in the connecting piece between mask and tube is always free so that the exhaled air containing CO₂ can escape.
5. Never place **AutoTREND** in a cupboard shelf or under the bed. Make sure the air circulation around the device is not hindered.
6. Keep the unit away from heaters and heated surfaces.
7. In case oxygen is given to you in connection with the respiration therapy make sure that all regulations in view of general and fire safety during dealing with oxygen will be observed.
8. During mobile use, the device is only to switched on in the parked car.
9. You should immediately consult your physician if due to use of the device problems such as dryness of the mucous membranes in nose and pharynx, trouble of the frontal sinus, earache, a runny nose, hypersensitivity of the skin, irritability, change of mood, disturbance of the sense of direction or memory defects occur.
10. You are requested to contact your authorized dealer immediately, if the device does not function in a proper way.

Safety Instructions

In order to maintain electric safety please observe the following points:

- ▶ Do not switch on the device if casing or cable are damaged.
- ▶ Do not open the casing of **AutoTREND**. In case of failures always contact your authorized dealer.
- ▶ The device is always to be kept dry.
- ▶ Never use the device in damp rooms or in a bathroom.
- ▶ Never place vessels or glasses filled with liquids on the device.
- ▶ In case the device falls into water, do not touch it.
- ▶ Do not place the device in the near of water-containing vessels (or a bath-tub).
- ▶ Before cleaning the device the AC power plug is always to be pulled out of the socket.

Stand-by-Operation

When the turbine is switched off the unit is in stand-by mode and this is indicated by the illuminated display with date and time.

When a warm air humidifier is connected to the unit, this is in standby mode; the present heater setting is indicated.

The power consumption in this operating mode is approx. 3,5 Watts.

By switching off the device with the main switch on the reverse of the device **AutoTREND** is totally switched off.

In this case the internal clock is supplied by a built-in battery.

- ▶ **AutoTREND can safely remain in stand-by operation all the time.**

Intended Use

Intended Use

The **AutoTREND** is for treatment of nighttime sleep apnea in adult patient weighing at least 30 kg.

The **AutoTREND** provides positive airway pressure by automatic adjustment of the optimum pressure value depending on respiratory events.

This device is not intended for use with ventilator-dependent patients.

This device is designed to be used with nasal breathing masks equipped with an exhalation port to allow a continuous flow of air through the mask. Do not wear the mask with the device turned off as rebreathing of the air occurs. Refer to the manufacturer's instructions for the mask and exhalation port.

Devices equipped with an **AquaTREND** accessory humidifier provide humidification of the air delivered to the patient.

Contraindications

The respiration therapy may be contraindicated for patients with the following pre-existing medical conditions:

- ▶ Bullous lung diseases
- ▶ Pneumothorax
- ▶ Coronary disease or severe cardiac rhythm disturbances
- ▶ Extremely low blood pressure
- ▶ Pneumocephalus or pre-existing CSF leaks or head trauma.

Acute sinus or middle ear infection may be an indication to suspend the therapy. Contact your physician if you have questions about this condition.

Not for use with patients whose supraglottic airways have been bypassed.

Devices equipped with an **AquaTREND** accessory humidifier are not intended for use with medications, aromatic oils or other substances added to the humidifier water.

Technology of **AutoTREND**

AutoTREND is a respiration therapy unit for treatment of night-time sleep apnea. Within a certain pressure range **AutoTREND** adapts automatically the therapy pressure to the respiratory situation of the patient. So during sleep phases without obstructive events the therapy pressure will be decreased and beginning obstructive events will be treated effectively by smoothly pressure increase. For a high therapy comfort and acceptance the therapy pressure should be just as high as necessary and as low as possible.

AutoTREND detects the following respiratory events:

- Obstructive Apneas
- Hypopneas
- Central Apneas
- Snoring
- Normal Breathing

The detection of the different respiratory events will be realised by the following 3 channels:

1. Measuring of airway constriction
2. Detection of flow limitation by flow measurement
3. Registration of snoring by detecting of noise

Because of the combined analysis of all results the differentiation between obstructive and central events will be very safely.

AutoTREND adapts the therapy pressure depending on the results of analysis as follows:

Pressure increase

- in case of obstructive events

Pressure decrease

- in case of central events and normal breathing

Additionally for individual patient comfort and requirements the speed of pressure increase can be adjusted in 5 steps by your doctor by using the PC-software

AutoControl.

For pressure generation **AutoTREND** has an electronically controlled blower. In order to keep the patient's burdening as low as possible the turbine has been equipped with sufficient power reserves as well as a fast control circuit.

The pressure is measured directly in the mask and controlled by the device.

That means for the patient that the breathing work is as low as possible.

Technology of **AutoTREND**

AutoTREND has separate air ductings for breathing air and convection air for the electronics. The cold temperature technology applied in the power electronics ensures a low temperature and a long life of the device.

For the control of all functions **AutoTREND** has a built-in microcomputer. The integrated quartz alarm clock increases the comfort during use of the device.

Sometimes but in winter when the room air is dry the mucous membranes in the mouth and nose can dry out. This is unpleasant and in isolated cases also leads to infections. Air humidification may therefore also be necessary in conjunction with respiration therapy.

AquaTREND accessory devices are available which provide humidification. The humidifier simply clicks into position and can be removed by pressing the release button.

Refer to the **AquaTREND** user's manual or contact your dealer for more information.

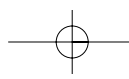
Hints to be observed before starting

Before operating the device, please pay attention to the following:

1. Never switch on the device if it has recently been in a very cold environment. Wait approximately one hour for temperature compensation.
2. Check the filter cassette at regular intervals and change it if necessary (see pages 18, 28). Never use the device without filter cassette.
3. Clean the mask system at regular intervals, and check the accessory especially the therapeutic tube, mask and fixing straps. We recommend to wash the face before going to bed as skin oils and cosmetic should be removed.
Thus, the life-span of the mask will be increased and skin irritations can be avoided.
4. Verify that the measuring tube (smaller tube) is correctly attached, open and free of moisture or obstructions. If water enters this tube during cleaning, take special care to remove it.

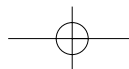
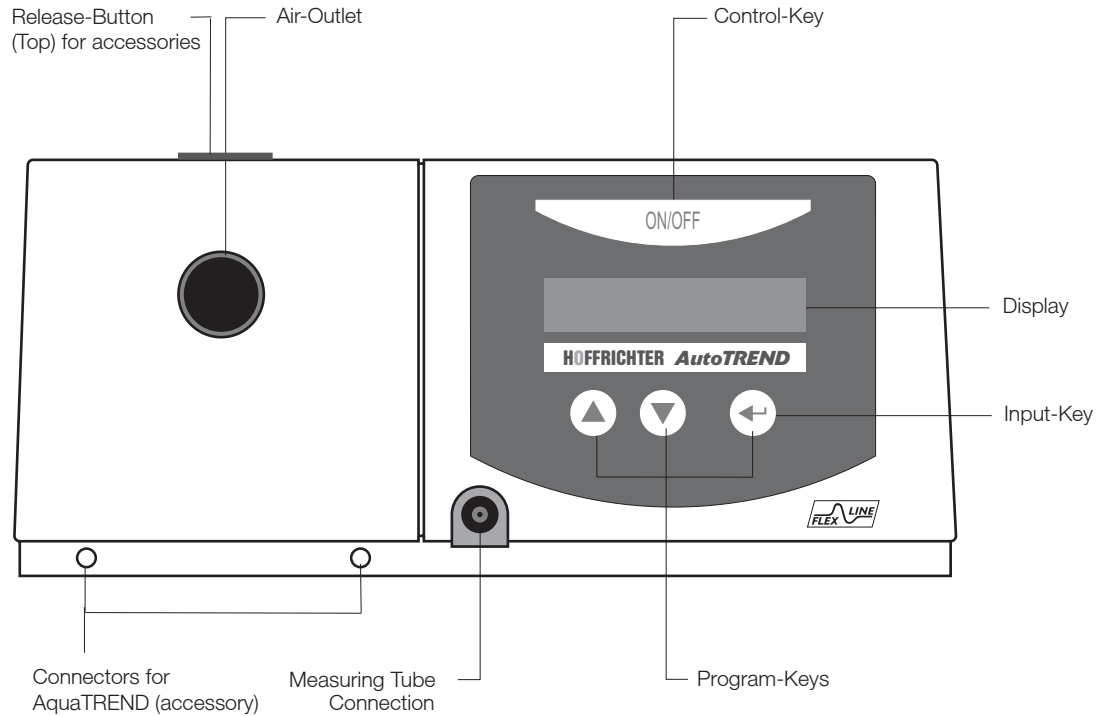
Please pay attention to the following advices for setting up:

1. Never place the device near a heater or radiator. Make sure the air circulation especially under and behind the device is not hindered by furniture, curtains or pillows.
2. Place the device beside your bed on a firm and even surface such as a nightstand or bedside table.
3. During mobile operation the device is also to be placed on an even and firm surfach with should have a border preventing from falling down.



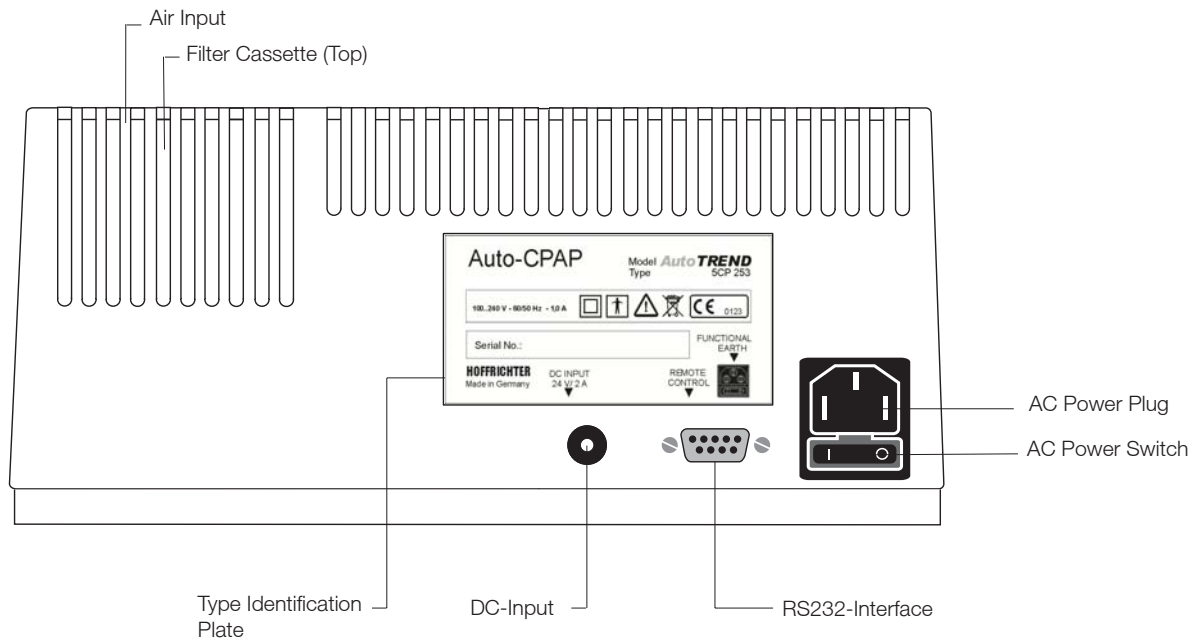
Description of the Device

Front View



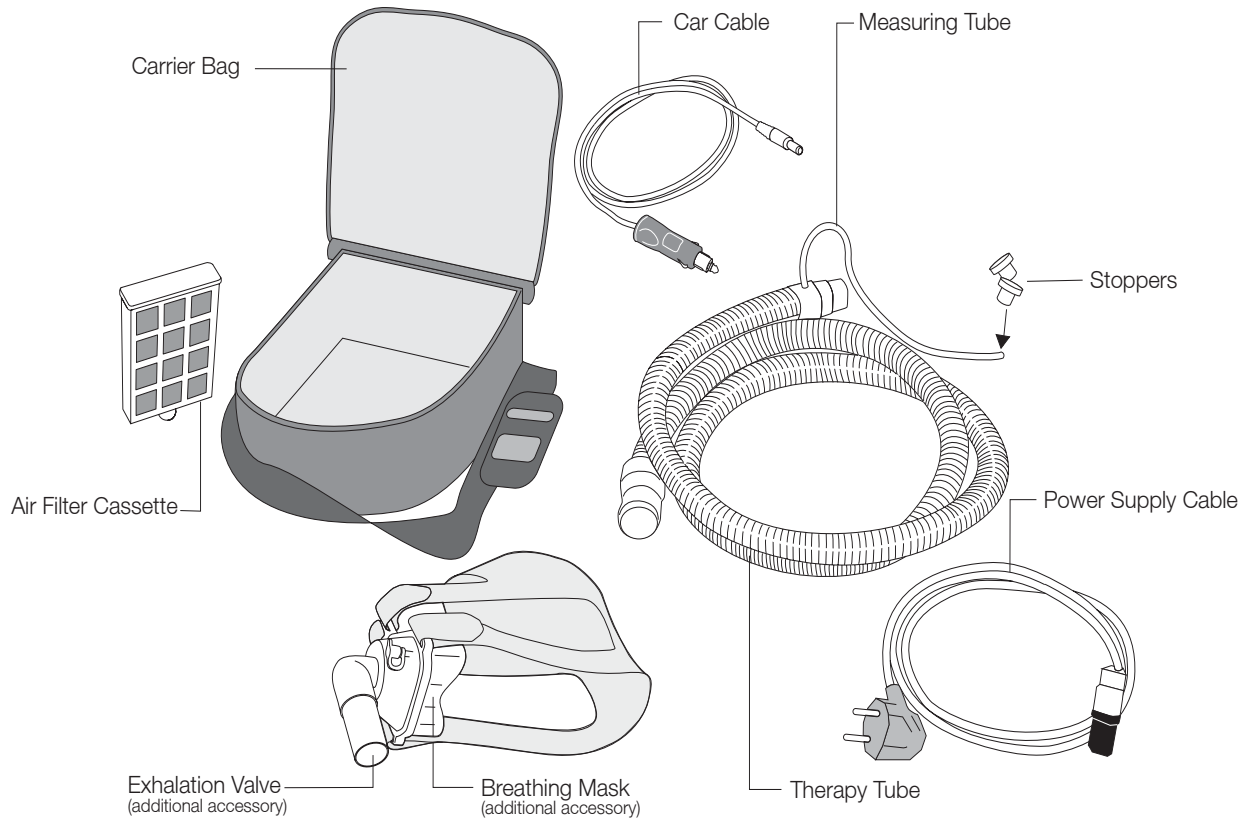
Back View

Description of the Device



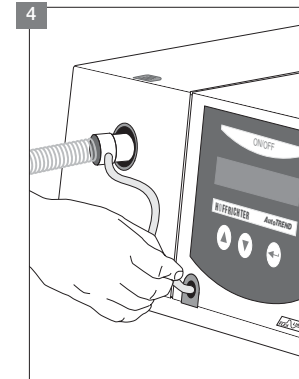
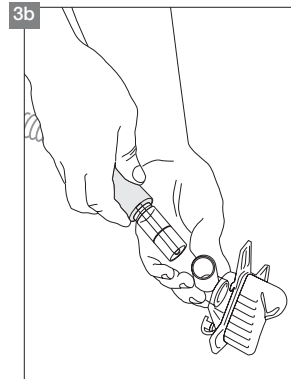
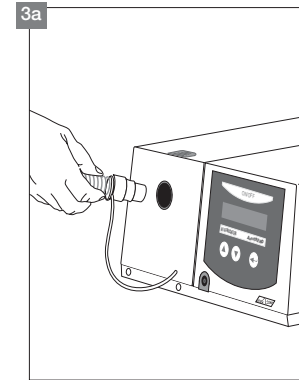
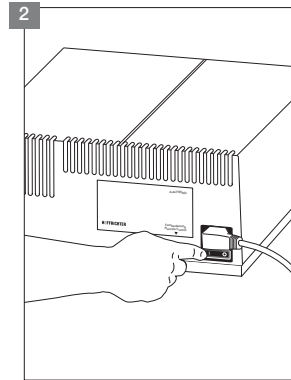
Description of the Device

Accessory and Spare Parts



Proper Use of the Device

1. As soon as the device is placed properly please connect it with the power supply cable to an earthing contact socket.
2. Switch on the AC power switch on the back of the device. The device welcomes you with a short text in the display. Afterwards the display switches over to indication of current date and time.
3. Connect the therapeutic tube
 - a) to the air outlet and
 - b) to the breathing-mask.
4. Connect the measuring tube to the sensor socket (measuring tube connection).
5. Put on the breathing mask. If the automatic operating mode has been selected the device will start working upon the first breath. In case of manual operating mode you must press the Control Key (ON/OFF) for starting the device.
6. Now first **AutoTREND** starts with the adjusted maximum pressure for the certain period of time you have selected for mask test. During this time you should fit the mask correctly in order to eliminate possible leakages.

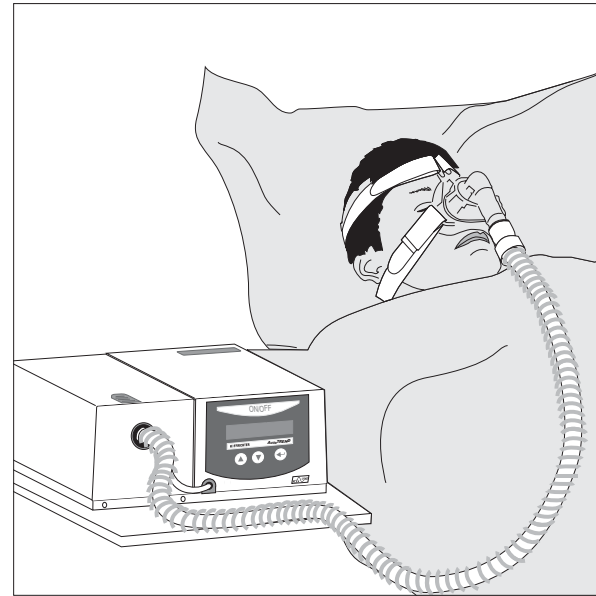


Proper Use of the Device

- Place the therapy tube in such a way that there is no tension onto the mask when you lay down.
- Breathe deeply and calmly and only through the nose. If the softstart-function is activated after leakage test the device will automatically reduce the therapeutic pressure first and then gradually increase it until the start pressure is reached. This enables you to fall asleep while the device is working with a reduced pressure.

NOTE:

Read in the section "Programming" how the time for softstart and mask test can be adjusted to your individual requirements.



Use of Oxygen

Please observe the following advices if you must additionally inhale oxygen during the respiration-therapy.

We recommend leading of liquid oxygen directly into the breathing-mask. Please use a non-buckling tube made from material approved for medical applications. Consult your authorized dealer.

NOTE:

At a fixed flow rate of supplemental oxygen flow, the inhaled oxygen concentration will vary, depending on the therapy pressure.

Refer to the oxygen suppliers instruction for use.

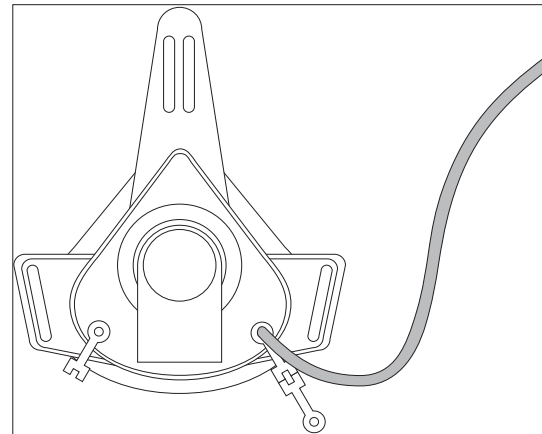
WARNING!

Oxygen promotes combustion processes. Observe the valid rules for fire safety during use of oxygen, to reduce the risk of fire. Keep the oxygen instruments free from oils. All sources of ignition including smoking or smoking materials must be kept away from the device and preferably out of the room.

WARNING!

If oxygen is used with this therapy device, the oxygen flow must be turned off when the therapy device is not operating.

- ▶ For therapy first switch on turbine and then switch on oxygene.
- ▶ For ending therapy first turn off oxygene then turn off turbine. Please program "Automatic OFF" as described on page 23.
- ▶ Before each use, check the proper fit of the tube connections



Cleaning Instructions, Changing of Filter

Daily Cleaning of the Breathing-Mask

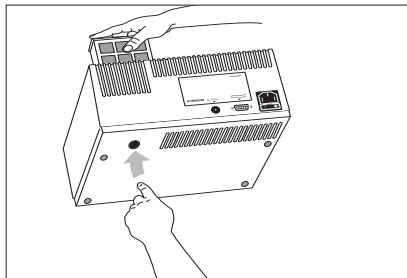
- ▶ Disconnect the mask and exhalation port from the therapy tube.
- ▶ Clean the breathing mask in accordance with the instructions of the manufacturer of the mask.

Changing the Filter

- ▶ If the filter is dirty or the display reads → **FILTER** ←, the filter cassette must be changed (see page 28). Press on the underside of the unit on the filter cassette protrusion and remove the cassette from the top. (see picture)
- ▶ To reset the message please keep the input key pressed while switching on the device.

Note:

Never use the **AutoTREND** without filter cassette. Only original **HOFFRICHTER** filter cassettes may be used. Otherwise the claim for warranty expires.



Weekly Cleaning of the Therapy Tube

- ▶ Disconnect the tubing from the **AutoTREND** and the mask and exhalation port.
- ▶ Before cleaning:
The measuring tube has to be closed tightly with the stoppers.
- ▶ Use mild soap water and rinse the measuring tube very carefully with clear water.
Air-dry the tube very well.
- ▶ After cleaning:
Remove the stoppers.

Weekly Cleaning of the Device

- ▶ Unplug the AC power cord or switch off the main switch.
- ▶ Clean the device with a cloth moistened with soap water. Afterwards wipe the device dry.

Cleaning of the Fixing Straps (if necessary)

- ▶ Separate the fixing straps from the breathing-mask.
- ▶ Clean the fixing straps in accordance with the instructions of the manufacturer of the straps.

A chemical or thermic disinfection of the device or parts of the device by the user is not necessary. Before change of patient the hygienical reprocessing of the device has to be realised by the authorised dealer or manufacturer.

Alarm Functions of **AutoTREND**

Power Failure

Probably you won't notice a power failure at night-time. As a consequence you would permanently inhale the exhausted air from the therapy tube. Therefore

AutoTREND has an alarm mechanism responding if a power failure occurs at night-time or if a fuse becomes defective.

In this case an acoustic alarm would wake you up so that you can take off the mask and breathe fresh air. The alarm can be switched off by pressing the Control Key (ON/OFF).

After the end of power failure the turbine of **AutoTREND** starts again automatically.

Mask Alarm

This alarm function is active only if the automatic function is switched off. If at night-time the mask slips down or the therapeutic tube is pulled off the device won't switch off automatically but raise an acoustic alarm. This additional safety function, however, requires that the device is switched on and off with the Control Key (ON/OFF) each morning and evening.

Wake-Up Alarm

For higher comfort **AutoTREND** has an integrated alarm-clock. It can be activated and deactivated with the program keys.

The alarm-clock raises alarm at the pre-set wake time. If you press the Control Key (ON/OFF) once the alarm will stop for the next five minutes and if you press it twice the alarm will be totally switched off.

Check of the Power Failure Alarm:

Use the device with running turbine and pull out the AC power plug or switch off the AC power switch. Now the acoustic alarm should occur. Check every month if the acoustic signal lasts long enough (guide value 1 min). After pressing the control key or switching on the power supply the acoustic signal will stop.

Check of the Mask Alarm:

Use the device with running turbine and switch off automatic function. Do not fix the mask to the face. After the displayed time an acoustic signal will occur.

Functions of **AutoTREND**

For programming the functions of **AutoTREND** three keys are available:

- ↵ = Input-Key;
- ▲ = Up-Key;
- ▼ = Down-Key.

By holding the INPUT-Key pressed, you reach the input mode after 1 second. Now you see the menu of **AutoTREND** in the display.

The following 2 different kinds of menu can be activated:

Complete menu

- ▲ Language..... ENG
- ▲ Wake Time04:45
- ▲ Time16:24
- ▲ Date13.Apr.06
- ▲ Mask Test..... 30s
- ▲ Ramp15min ↵ P-Ramp... 4.0hPa
- ▲ AutomaticOff
- ▲ ModeAPAP (PIN-protected)
- ▲ P-Start6.0hPa ↵ P-Min (PIN-protected)
- ↵ P-Max (PIN-protected)
- ↵ Turbine..... 00646h
- ↵ Filter.....00324h
- ↵ Therapy.....00579h
- ▲ Exit Menu

Standard menu

Wake Time.....04:45
Time.....16:24
Date.....13.04.06

NOTE:

If you prefer instead of the standard-menu the complete-menu (or reverse) take up contact your dealer please.

The display always shows two lines. With the keys ▲ and ▼ you can choose which lines are to be indicated. A triangle symbol ► in front of a line means that this line has been chosen.

Example: Setting alarm clock

Press key ↵ for 1 second and choose the line "Wake Time". Display indicates:

► Wake Time..... 06:30
Exit Menu

After pressing key ↵ again the hour of the wake time is flashing and can be changed by the keys ▲ and ▼. Press key ↵ again for changing wake minute according to same procedure. To come back to the menu press the key ▼ again. For leaving the menu select point "Exit Menu":

► Wake Time..... 07:15
Exit Menu

Functions of *AutoTREND*

Press Input-Key ↵ to leave the programming mode. During standard operation the display indicates date and time:

18.Feb.04 12:42

The alarm clock can be activated or deactivated by the keys ▲ and ▼.

With the key ▲ the alarm clock can be switched on. For controlling the programmed alarm time is indicated for a short time in the display. After this a bell symbol shows that the alarm clock is active.

18.Feb.04  12:42

With the key ▼ the alarm clock can be switched off. In this case the bell symbol is not indicated.

NOTE:

If there is no key pressed during programming for 30 seconds the programming mode will be left automatically.

If a modified value is not confirmed by pressing Input-Key and the programming mode will be left the previous value remains further on.

All functions are programmed in the same way:

Press ↵ for 1 s, and choose the line requested with the keys ▲ and ▼:

By pressing the Input-Key again the following options can be chosen:

Language	DEU/ENG/FRA/ITA/PLK	
Wake time	Wake Hour, Wake Minute	
Time	hour, Minute	
Date	Year, Month, Day	
Mask Test	0 ... 90s	(in steps of 5 s)
Ramp	0 ... 60min	(in steps of 1 min)
P-Ramp	4hPa ... P-Start	(in steps of 0,5 hPa)
Automatic Mode	Off / On APAP / FLEX / CPAP	
P-Start	(APAP-Mode) P-Min ... 18,0hPa	(in steps of 0,5 hPa)
P-Min	(APAP-Mode) 4.0 hPa ... P-Start	(in steps of 0,5 hPa)
P-Max	(APAP-Mode) P-Start.. 18,0hPa	(in steps of 0,5 hPa)
Pressure	(CPAP-Mode) 4.0 ... 18,0hPa	(in steps of 0,5 hPa)
Pressure	(FLEX-Mode) 4.0 ... 18,0hPa	(in steps of 0,5 hPa)
FLEX-Level	1, 2, 3	
Power	time indicated in h	
Turbine	time indicated in h	
Filter	time indicated in h	
Therapy	time indicated in h	
Exit Menu		

If you want to finish the programming mode, choose the menu line "Exit Menu" and press key ↵.

Functions of **AutoTREND**

Language

Display indications of **AutoTREND** are available in English (ENG), French (FRA), Italien (ITA), Polish (PLK) and German (DEU).

Date, Time

Date and time of the internal clock can be adjusted. The internal clock has a built-in battery with reserve power for 8 years without mains connection. You can adjust the weekdays (Mo till Su), day (1 till 31), month (1 till 12), year (00 till 99), hour (00 till 24) and minute (00 till 59). The clock serves for indicating the right date, for the right function of the alarm-clock and for the exact recording of current events.

Mask Test

To ensure that there is no mask leakage even during the maximum therapy pressure (P-Max) a mask test time up to 90 s can be programmed. This mask test runs under maximum therapy pressure before softstart ramp and checks whether there is a leakage.

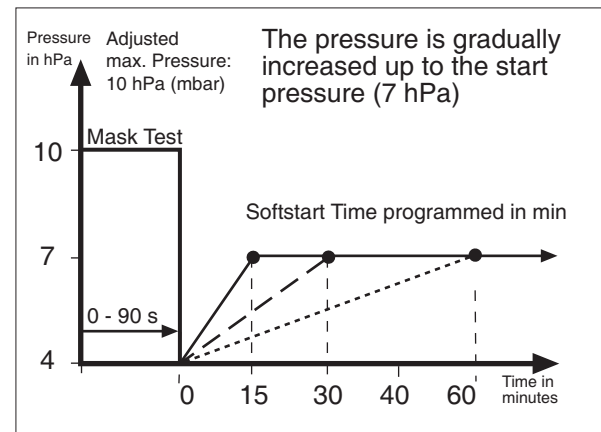
Ramp

After each turbine start the computer of **AutoTREND** checks whether a softstart-ramp has been programmed. During the time which you have preset the softstart function slowly raises the pressure from an adjustable initial softstart pressure (P-Ramp) up to the start pressure (P-Start) by your physician. This should ease your falling asleep.

Especially if you have not got used to the respiration-therapy the softstart can give you relief.

The delay time of **AutoTREND** can be adjusted between zero (in this case the start pressure prescribed is instantly given) and 60 minutes (the start pressure prescribed is built-up within 60 min).

The initial pressure (P-Ramp) is adjustable between 4 hPa and the adjusted start pressure (P-Start).



Functions of *AutoTREND*

Automatic Operation

In case of automatic operation you have only to put on the mask. As soon as you breathe the turbine of **AutoTREND** will be switched on.

If you take off the mask the turbine will be switched off automatically after a delay time. During automatic operation the device also will be switched off if mask or tube drop off unnoticed at night-time.

That is why **AutoTREND** optionally offers the function "Automatic OFF" with mask-alarm.

If you choose this function you have to press the Control-Key (ON/OFF) for switching on the device each evening and switching off each morning. In this case you get an acoustic alarm if the mask drops off at night-time.

Mode

AutoTREND can operate in APAP-mode, CPAP-mode as well as in FLEXLINE-mode. The FLEX-mode is a comfortable mode in CPAP-therapy. Proportional to the patient flow the pressure will be decreased while the patient exhales and increased when the patient inhales. The following effects take place:

- ▶ The breathes will become more natural and pleasant because of the diminution of breathingwork during in- and exhalation.
- ▶ Reduction of the mean CPAP-therapy pressure

The setting of the mode is PIN-protected and should be done by your physician. The adjustment of mode is PIN-protected and should be done by your physician.

Pressure (P-Start, P-Min, P-Max / P-Set)

The adjustment of the desired pressures in APAP-mode or CPAP-mode is PIN-protected and done by the physician.

Please, never try to "crack" the PIN.

You should better talk to your physician in case of any doubt about the settings.

FLEX-Level

The amount of the pressure assistance depends on the airflow, the adjusted FLEX-Level and the adjusted therapy pressure. The three FLEX-Level stages serves an individual adaptation to the patient.

- ▶ FLEX-Level 1 small pressure assistance
($\Delta P_{\max} = \pm 1 \text{ hPa}$)
- ▶ FLEX-Level 2 medium pressure assistance
($\Delta P_{\max} = \pm 2 \text{ hPa}$)
- ▶ FLEX-Level 3 high pressure assistance
($\Delta P_{\max} = \pm 3 \text{ hPa}$)

The setting of the FLEX-Level is PIN-protected and should be done by your physician (see Tab.1 page 24).

Function of **AutoTREND**

Power

Under this point you find the total operation time including stand-by operation, the running time of the turbine, the operation time of the filter, and the therapy time of **AutoTREND**.

Table 1: Examples for pressure changes in FLEXLINE-Mode

Breathing frequency = 20 bpm, R5, C50, therapy pressure 10 hPa

FLEX Level	Peak-Flow Inspiration [l/s]	Peak-Flow Expiration [l/s]	Pressure increase Inspiration [hPa]	Pressure drop Expiration [hPa]
1	0,25	0,20	0,35	0,35
	0,50	0,40	0,65	0,55
	0,75	0,65	0,95	0,70
	1,00	0,85	1,00	1,00
2	0,25	0,20	0,50	0,45
	0,50	0,35	0,85	0,65
	0,75	0,65	1,35	1,00
	1,00	0,95	1,85	1,40
	1,25	1,35	2,00	2,00
3	0,25	0,20	0,55	0,60
	0,50	0,35	1,05	0,95
	0,75	0,65	1,70	1,35
	1,00	0,90	2,20	1,80
	1,25	1,15	2,85	2,55
	1,40	1,35	3,00	3,00

Trouble Shooting

PROBLEM	POSSIBLE CAUSE	HELP
Pain in nose, nasal cavity or ears	Inflammation	Stop therapy and contact your doctor
Unpleasant feeling of too high pressure	You are not yet used to the respiration-therapy	Relax and use softstart function
Dryness and irritation of nose and throat	Dry treatment air	Consult your doctor about prescribing the addition of AquaTREND humidifier
Symptoms of sleep apneas appear again	Your personal life conditions have changed	Contact your doctor
	Device is not operating properly	Check device by an authorized company

Trouble Shooting

PROBLEM	POSSIBLE CAUSE	HELP
Irritated or dry eyes	Leakage between mask and skin	Check correct position of mask New mask if defective
Wet nose	Reaction to the air flow	Contact your doctor about the use of a humidifier
Head cold, sinus drainage or discomfort	Normal cold or sinus infection	Stop use if your condition interferes with treatment, contact your doctor
Cold nose	Low room temperature	Increase room temperature Warm up tube under your pillow
Inflammation of the skin under the mask	Wrong mask size Fixing straps too short Allergic reaction	Contact your doctor Relax the straps Contact your doctor

Trouble Shooting

PROBLEM	POSSIBLE CAUSE	HELP
Air too warm	Dirty filter	Exchange filter
	Air input is blocked	Make sure air input is clear
	Heating too close to AutoTREND	Check position of AutoTREND
No air flow	Device is defective	Ask your authorized dealer
	Water in measuring tube	Dry measuring tube
Low air flow	Softstart function is active	Decrease softstart time
	Air input is blocked	Make sure air input is clear
Turbine works always with maximum speed	Measuring tube is disconnected or blocked	Check measuring tube
	Leakage in device	Ask your authorized dealer
	Water in measuring tube	Dry measuring tube

Display Indications

In the following table the most important display indications are shown. The sense off all other indications can be taken from context.

Mask Test. . .55s	You still have 55 s for fitting the mask correctly. After that time the softstart function starts.
Ramp. 10:33	You still have 10 min and 33 s until the full therapeutic pressure is reached.
Mask Alarm. . 10 s Check Mask	The mask has dropped down from your face or you haven't put it on during "Automatic OFF" and running turbine. After 10 s mask alarm will occur.
Awake On. . . 05:45	In normal operation you have pressed the key ▲ and get the message that you will be woken up at a quarter to six o'clock.
Awake Off	In normal operation you have pressed the key ▼ and get the message that the alarm-clock has been switched off right now.
Wake Alarm	Wake alarm has been triggered. Press the control key (ON/OFF) once in order to start the slumber. If you press the main key for the second time during the slumber phase the alarm is finally switched off.
Slumber. . . 1:18	You still have 1 min and 18 s until the alarm-clock is ringing again.
Wake Alarm off	You have pressed the control key and finished the slumber phase.
→ Filter ←	You are required to exchange the filter cassette (see page 18). If switching on the device after filter exchange please keep the input key ↵ pressed in order to reset the message.
→ Service ←	AutoTREND needs a service check. Please inform your after-sales service as only the authorized service people can reset this message. The device can be used furtheron.
Put on Mask!	You are required to put on the mask and to breathe through the nose.
Take off Mask!	During activated automatic one has tried to switch off the device by hand. Please take off the mask. The device switches off the therapeutic pressure after a few seconds.
Power Failure Restart Turbine	After the end of power failure the turbine of AutoTREND restarts automatically.

Inspection and Check

Although all parts of **AutoTREND** are proved to have a long life the device should be examined from time to time. A device check is necessary if the message "**Service!**" appears in the display. In this case we urgently recommend you to have the device examined and maintained by the authorized after-sales service because only these people have the necessary tools and measuring devices. Also in case of the "**Service!**" display, the device can be used furtheron.

Please pay attention to the following check-list:

- ▶ weekly check of the alarm function "Power failure" (see page 19)
- ▶ weekly check of "Mask Alarm" (see page 19)
- ▶ check of the filter cassette and if necessary replacement by a new one

Attention!

The display message "**Service!**" cannot be removed if the maintenance is executed by an unauthorized workshop.

For a long lifetime of your **AutoTREND** device note the following points:

1. Please follow the cleaning instruction on page 18.
2. Check the system at regular intervals.

Approved Accessories

Specification	HOFFRICHTER Order-No.
---------------	-----------------------

Filter Cassette	00007870
AC Power Supply Cable	31100001
Therapy Tube	00007116
Stoppers	44000012
(for closing measuring tube during tube cleaning)	
Carrier Bag	00007860
User's Manual	00007861

Plug-In-Humidifier

AquaTREND I	00007850
AquaTREND II	00007851
AquaTREND III-H0	00007852
AquaTREND III-H1	00007853
AquaTREND III-H5	00007890

Concerning available approved therapy masks and additional accessories please contact your authorized dealer.

NOTE:

The **AutoTREND** should be used only with Therapy Tubes provided by the manufacturer.

Technical Data

Dimensions (B X T X H)	230 x 225 x 110 mm
Mass	ca. 2,5 kg
Power supply	100 V~ ... 240 V~, 50 ... 60 Hz
Pressure range	4 ... 18 hPa (mbar) adjustable in steps of 0,5 hPa
Power consumption without humidifier	22 W (average value)
Power consumption of stand-by	< 5 W
Pressure variance	< $\pm 0,06$ hPa (mbar) at 10 hPa according to DIN EN ISO 17510
Inner resistance	< 0,12 hPa s/l
Noise level without mask	< 27 dB(A) at 10 hPa (mbar) according to DIN EN ISO 17510
Constant display	pressure value, bargraph, date, time, softstart ramp, alarm clock state
Operating Altitude	-400 m ... 3500 m above sea level
Operating Temperature	5° C ... 40° C
Storage Temperature	- 20° C ... 70° C

CE-mark according to the EC-directives 93/42/ECC, concerning medical devices, class IIa

Data subject to technical alteration

